



Morph and harmonize your network

## Descriptions

TAINET WANPro 2000i is a dual WAN Internet access router which combines a fast synchronous link with a standard-based IDSL port. This combination offers small to medium sized businesses a cost effective solution to interconnect remote offices with headquarter LAN. The WANPro 2000i also provides fast Internet access for e-mail exchanges, file-transfers, database queries, and connection between corporate intranets.

The IDSL (ISDN Digital Subscriber Line) port offers a standard BRI U-interface with 2B1Q line code to transmit data at speeds ranging from 64 Kbps to 128 Kbps over a single twisted pair of copper wires. WANPro 2000i is fully compatible with IDSL products from other vendors, as well as TAINET's own Mercury IDSL modules with standard BRI U-interfaces.

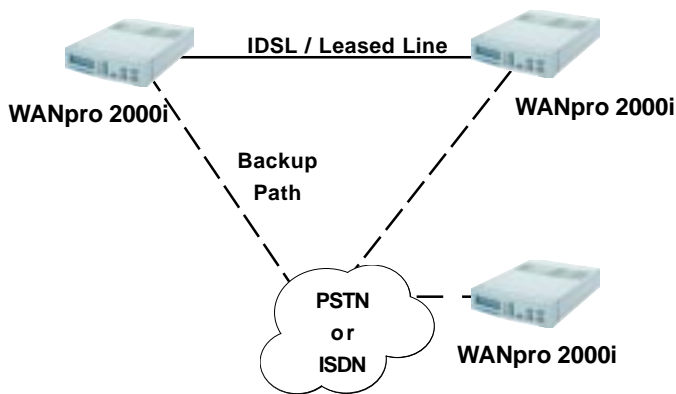
Broadband connectivity and the additional WAN interfaces support new access services such as broadband DSL and cable. Modular architecture supports optional V.35 interface which can be connected to other devices for use as a backup or secondary WAN connection. It offers additional savings to the customer by eliminating the router replacement cost, affordably fulfilling the needs of growing businesses to upgrade their e-business applications.

## Features

- Dual WAN provides two independent access methods via IDSL and V.35
- Advanced frame relay protocol
- Easy set up using a front panel 2 x 16 characters LCD display or a friendly window user interface via console port or Telnet
- Easy upgrade via flash memory and TFTP
- NAT (Network Address Translation, RFC 3022) with sophisticated extension and secure NAT "firewall" to hide LAN IP addresses, allowing flexible use of available addresses coming from the ISP
- Automatic address assignment uses DHCP server for automatic assignment of IP address, masks, default gateway, DNS server, and WIN server to LAN workstations
- Security for remote networks includes transmitted and received packet filtering



## Application Diagram



### Security

- Static IP filter (incoming and outgoing)

### Diagnostic

- ICMP Ping
- Digital loopback of IDSL interface

### Management

- SNMP v1 and MIBII
- Telnet
- Console
- TFTP

### Power Requirements

- AC: 90 ~ 265 V, 47 ~ 60 Hz
- Power Consumption: 10 W maximum

### Dimensions and Weight

- 194 W x 60H x 316D mm

### Operating Environment

- Operating temperature: 0 °C ~ 50 °C
- Storage temperature: -25 °C ~ 70 °C
- Relative humidity: 5% ~ 95% (non-condensing)

## Technical Specifications

### LAN Interface

- Ethernet 10 Base-T with RJ-45

### WAN Interface (Optional)

- Synchronous or asynchronous data format with V.35

### IDSL Interface

- ISDN Digital Subscriber Line interface with RJ-45
- 2B1Q IDSL line coding transceiver

### Frame Relay

- Multi-protocol interconnection over Frame Relay (RFC 1490)
- Local Management Interface (LMI)
- ANSI T1.617 (Annex D)
- ITU-T Q.933 (Annex A)
- LMI (Frame Relay Forum implementation agreement)
- Supports up to 8 PVCs

### Routing

- TCP/IP with RIP1 (RFC 1058), RIP2 (RFC 2453)

### PPP over leased line (RFC 1661)

### Dynamic Host Configuration Protocol (RFC 2131, 2132)

### NAT (Network Address) and NAPT (Network Address Port Translation) (RFC 3022)

## Ordering Info

Basic Unit	Description
WANPro 2000i/*	Dual WAN router with built in IDSL port and optional High Speed WAN port
(*) Optional WAN I/F /V35-1C	V.35; universal I/F as DTE or DCE, with V.35-V.24 cable



The Professional Partner

**TAINET COMMUNICATION SYSTEM CORP.**

### Headquarters

No. 25, Alley 15, Lane 120, Sec. 1. Nei-Hu Rd, 114 Taipei, Taiwan

TEL: 886-2-2658-3000

FAX: 886-2-2658-3232

<http://www.tainet.net>

\* Specifications subject to change without notice.

